

AlteTube™

Screw cap tubes for 9 x 9 large rack format



	1.2ml Screw cap	1.2ml Screw cap	2ml Screw cap	2ml Screw cap	5ml Screw cap	5ml Screw cap
Thread type	Internal	External	Internal	External	Internal	External
Max working volume - ml	1.2	1.2	1.8	1.8	4.5	4.5
Min storage temperature - °C	-196	-196	-196	-196	-196	-196
Tube height - mm	32.50	39.95	38.55	44.9	76.72	84.15
Tube height with cap - mm	41.75	42.15	47.75	47.15	86.15	86.40
Inner diameter - mm	10.67	9.48	10.44	9.44	10.65	9.50
Outer diameter with cap - mm	12.50	13.15	12.50	13.20	12.70	13.20
Identification	2D DataMatrix barcode on base, 1D barcode and human readable code on side					
2D DataMatrix barcode	White on black, 3mm x 3mm, 2 alpha prefix (AL) and 8 numeric Custom prefix available / Black on white available					
Capping options	Screw caps					
Sterility options	AlteClean™ / Sterile (E-beam) / Ethylene oxide (EtO) on request					
Rack format	9 x 9 (81 tubes)					
Rack material	Polycarbonate					
Rack dimensions - mm	132.5 (l) x 132.5 (w) x 52 (h) Hole diameter: 12.8				132.5 (l) x 132.5 (w) x 90 (h) Hole diameter: 12.8	
Packaging options	Bulk packed tubes, no cap – 50/bag, 10 bags/case Bulk packed tubes, precapped – 50/bag, 10 bags/case Racked tubes, no cap – 81/rack, 1 rack/case Racked tubes, precapped – 81/rack, 1 rack/case Screw caps – 500/case Empty racks – 1 rack/case				25/bag, 10 bags/case 25/bag, 10 bags/case	

Maximum working volumes are for guidance only.

Please request samples for evaluation.

Warning: Caps should not be immersed in Liquid Nitrogen.

AlteTubes should be stored in gas phase Liquid Nitrogen (GPLN) only.

High quality 2D barcoded tubes to assist sample identification

Internal thread screw caps

Manufactured by dual injection of ThermoPlastic Elastomer (TPE) and medical grade polypropylene.

Exceptional performance

The single piece cap provides a superior fixed seal, eliminating the risk of leakage or cross-threading.

External thread screw caps

Manufactured from medical grade polypropylene. Specially designed lip inside the cap contains the silicon O-ring, ensuring a leak proof seal.

AlteClean™

All tubes are manufactured from medical grade virgin polypropylene and certified DNase, RNase and Endotoxin (Pyrogen) free.



Large format racks

Store 81 tubes in a 9 x9 format.

Rack identification

One unique code in three formats: embedded 2D barcode on the base of the rack with matching 1D barcode and human readable code.

Tube identification

One unique code in three formats.

100% quality checks

Every barcode is checked to guarantee uniqueness across the full AlteTube range.



See the full range of 2D barcode readers in the AltemisLab™ product catalogue.

www.altemislab.com

AlteTube™

Screw cap tubes for 10 x 10 large rack format



**1.2ml
Screw cap**

**1.8ml
Screw cap**

**2ml
Screw cap**

	1.2ml Screw cap	1.8ml Screw cap	2ml Screw cap
Thread type	Internal	External	Internal
Max working volume - ml	1.2	1.5	1.8
Min storage temperature - °C	-196	-196	-196
Tube height - mm	32.50	39.95	38.55
Tube height with cap - mm	41.75	47.20	47.75
Inner diameter - mm	10.67	9.48	10.44
Outer diameter with cap - mm	12.50	12.60	12.50
Identification	2D DataMatrix barcode on base, 1D barcode and human readable code on side		
2D DataMatrix barcode	White on black, 3mm x 3mm, 2 alpha prefix (AL) and 8 numeric Custom prefix available / Black on white available		
Capping options	Screw caps		
Sterility options	AlteClean™ / Sterile (E-beam) / Ethylene oxide (EtO) on request		
Rack format	10 x 10 (100 tubes)		
Rack material	Polycarbonate		
Rack dimensions - mm	135 (l) x 135 (w) x 52.4 (h) Hole diameter: 12.9		
Packaging options	Bulk packed tubes, no cap – 50/bag, 10 bags/case Bulk packed tubes, precapped – 50/bag, 10 bags/case Racked tubes, no cap – 100/rack, 1 rack/case Racked tubes, precapped – 100/rack, 1 rack/case Screw caps – 500/case Empty racks – 1 rack/case		

Maximum working volumes are for guidance only.

Please request samples for evaluation.

Warning: Caps should not be immersed in Liquid Nitrogen.

AlteTubes should be stored in gas phase Liquid Nitrogen (GPLN) only.

High quality 2D barcoded tubes to assist sample identification

1.8ml external, 1.2ml & 2ml Internal thread screw caps

Manufactured from medical grade polypropylene.

Tube identification

One unique code in three formats. 2D barcode, with matching 1D barcode and human readable code.

AlteClean™

All tubes are manufactured from medical grade virgin polypropylene and certified DNase, RNase, Endotoxin (Pyrogen) free.



Large format racks

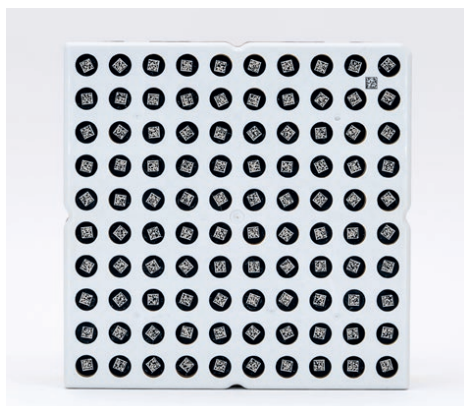
Store 100 tubes in a 10x10 format.

Rack identification

One unique code in three formats. Embedded 2D barcode, with matching 1D barcode and human readable code.

100% quality checks

Every barcode is checked to guarantee uniqueness across the AlteTube range.



See the full range of 2D barcode readers in the AltemisLab™ product catalogue.

www.altemislab.com