

Lab tools

Useful kit for the lab

AltemisLab is all about looking for better ways to work. Our range of lab tools have been designed to make everyday lab tasks easier.

Transforming lab technique

VolumeCheck™

Acoustic volume measurement
for plates and tubes

Part No.	Product name
----------	--------------

701002	VolumeCheck 384
--------	-----------------

Acoustic volume measurement

Non-contact volume verification for plates, vials and tubes.

Suitable for many applications

Sample library inventory management, volume checking prior and post liquid handling, and QC/QA checks.

Labware flexibility

Compatible with all plates, vials and tubes in SBS format.

Quickly interpret results

Colour map displays sample volumes for each well.

Consistent results

Reliable alternative to manual or visual volume inspection.

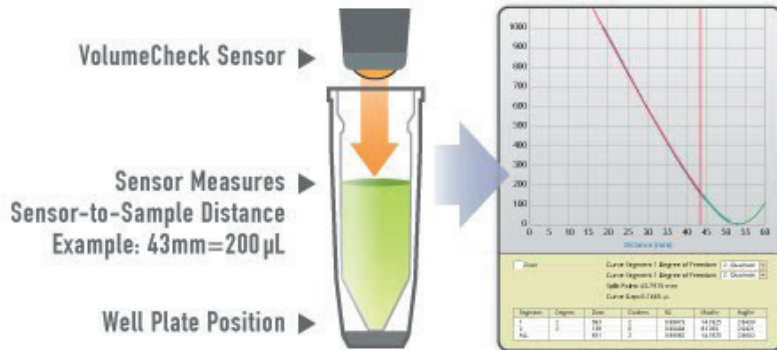
Increase productivity

Scan a 384 well plate in 30 seconds with fast scan mode.

Multi user lab friendly

Tube or plate height adapters are not needed.



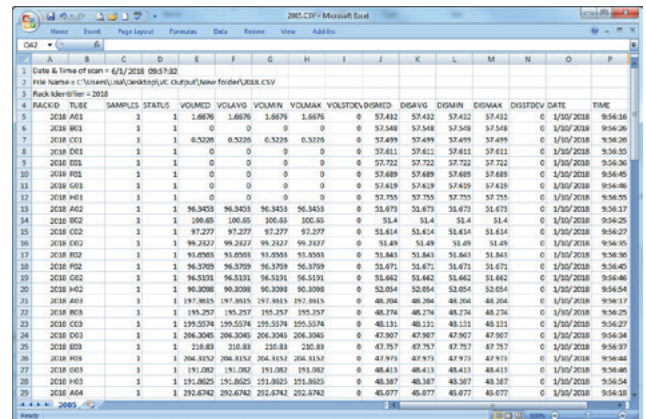
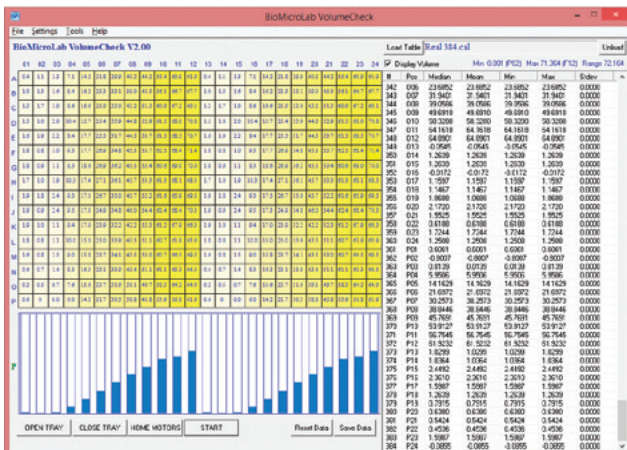


How it works

The VolumeCheck uses ultrasonic technology to measure the distance between the sensor and the sample meniscus.

Calibration tables are initially created by recording the sensor-to-sample distance of known sample volumes.

Samples with unknown volumes are scanned and the software extrapolates the distance from the calibration table to give the volume in each well position.



VolumeCheck Software

Intuitive and easy to use windows software is included.

Efficient throughput

Select specific rows or columns to scan.

Record data

Print plate reports and output results in customisable CSV files.

Simple set-up

Integrated calibration wizard assists with the calibration table creation.

Easy to read results

Individual well volumes are displayed in a customisable colour map.

Flexible working

Easily switch between saved calibration tables for different labware.

Integration ready

ActiveX toolkit and a robotic arm automation adapter are available.